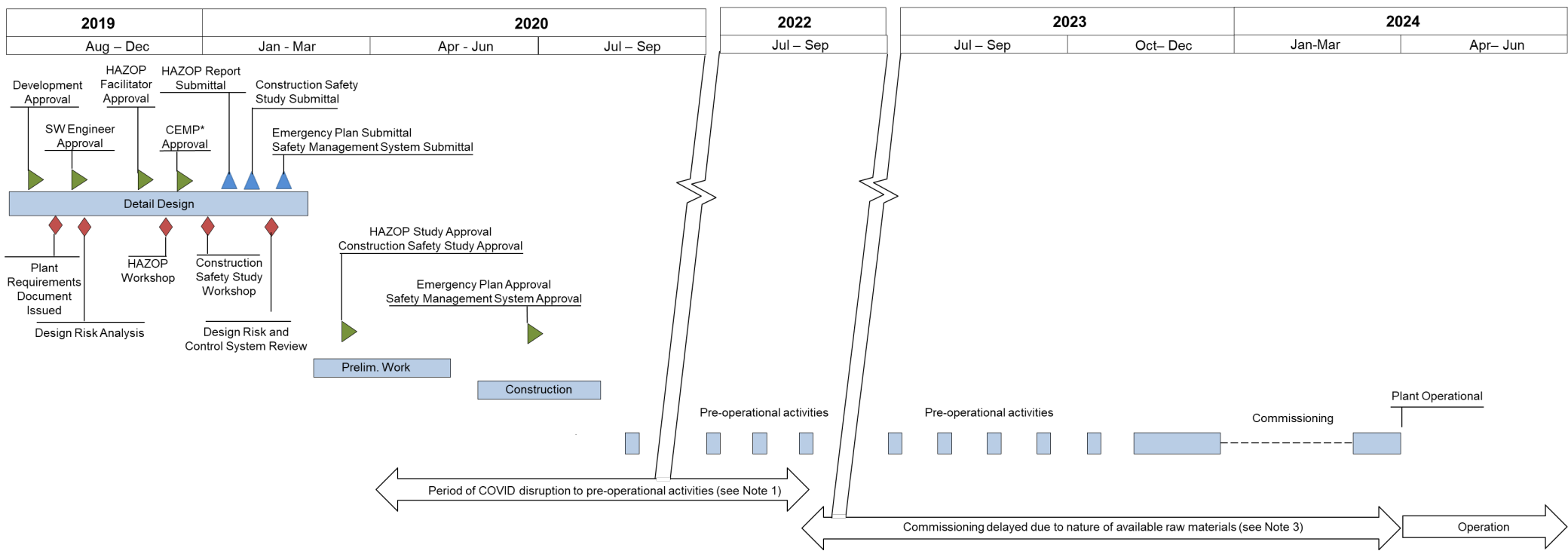




Tomago SPL Processing Capacity Expansion Development Approvals, Construction and Commissioning Program



 Department of Planning and Environment Approvals

 Submissions for Approval

 Safety Studies and Reviews

* CEMP - Construction Environmental Management Plan

Note 1 – Pre-operational activities disrupted, delayed and extended due to Covid 19 with travel restrictions on key technical personnel and limitations on allowing personnel on Tomago Aluminium Smelter site during high COVID risk periods followed by disruptions in supply chains due to COVID

Note 2 – Commissioning delayed due to lack of suitable raw materials from the Sep 2022 to February 2024. Suitable raw materials have become available since February 2024 and commissioning was completed in March 2024. Operations to commence 2 April 2024.